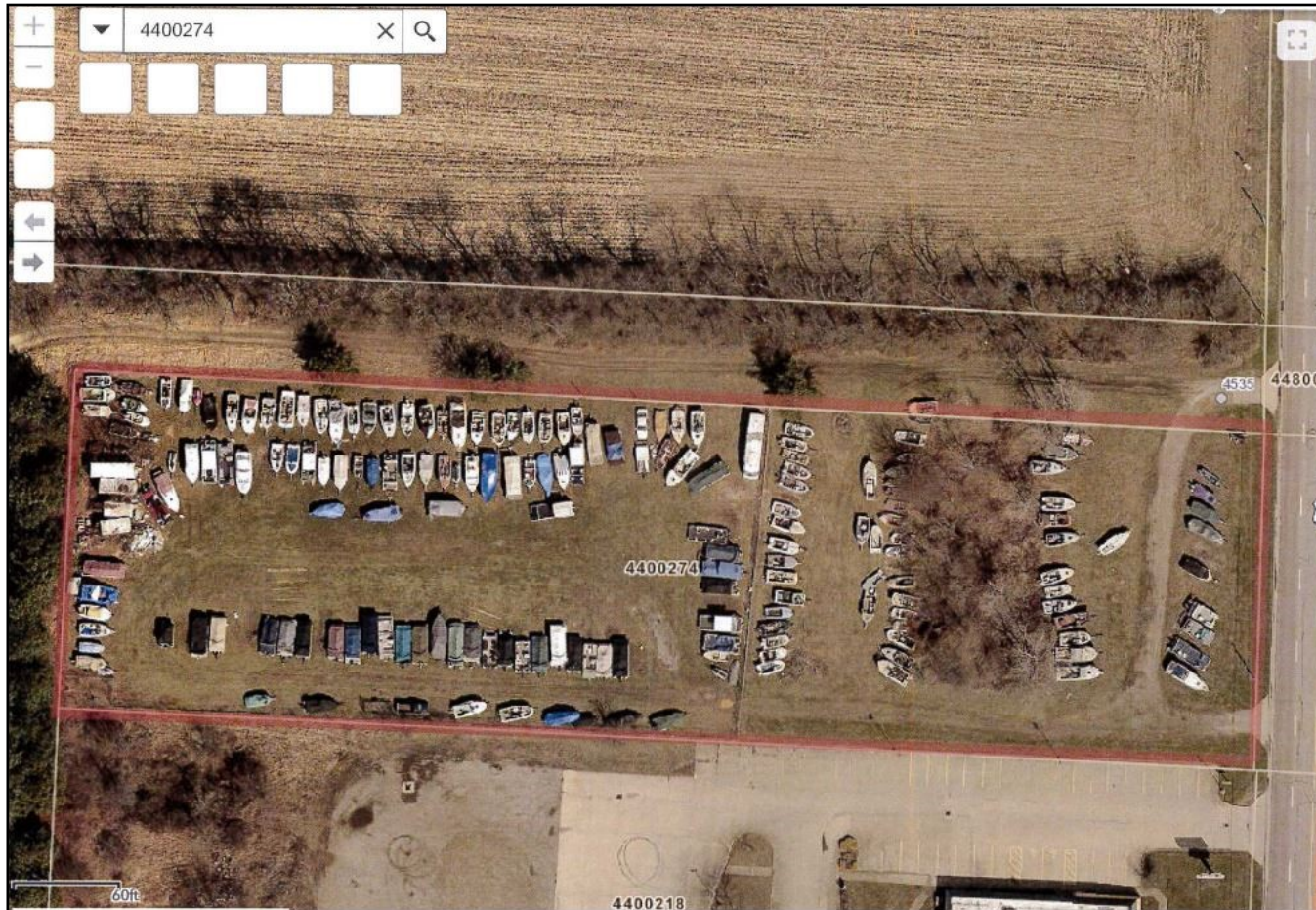


FOR SALE - VACANT LAND/DEVELOPMENT OPPORTUNITY

2.82 Acres on Ohio State Rte. 21 / 62 (Erie Ave) in Perry Township - 44662 / Parcel #4400274



INFORMATION:

Price-----\$289,000.00
Acreage -----2.82+/-
Frontage -----187ft. +/-
Depth -----846ft. +/-
Topography -----Flat
County-----Stark
City-----Perry Twp.
Zoning-----Light Industrial
Traffic Count -----18,630 AVPD
POPULATION:----- 379 20,211 65,019
RADIUS:----- 1-mi. 3-mi. 5-mi.

UTILITIES:

Gas ----- Dominion
Electric----- First Energy
Water----- Aqua Ohio
Sewer ----- Public

FEATURES:

- Flat, level land
- Close proximity to St Rte. 30
- Approx. 1-mi south of Menards development
- Many possibilities: Retail, Office, Mixed-Use

DIRECTIONS:

1-mi. south from St. Rte 30 on Erie Ave.
(SR 21/SR 62) Across from Petty's Marine

For More Information, Contact:



JACK BLAKNEY

Mobile: 330.704.6410

Office: 330.494.4411 Ext. 104
jack@tomjacksonrealty.com

4706 Douglas Circle NW
Canton, OH 44718

Office: 330.494.4411 • Fax: 330.445.2306

www.TomJacksonRealty.com



©2019 Tom Jackson Commercial Realty. We obtained the information above from sources we believe to be reliable. However, we have not verified its accuracy and make no guarantee, warranty or representation about it. It is submitted subject to the possibility of errors, omissions, change of price, rental or other condition, prior sale, lease or financing, or withdraw without notice. We include projections, opinions, assumptions or estimates for example only, and they may not represent current or future performance of the property. You and your tax and legal advisors should conduct your own investigation of the property and transaction.

12/30/19

FOR SALE - VACANT LAND/DEVELOPMENT OPPORTUNITY

2.82 Acres on Ohio State Rte. 21 / 62 (Erie Ave) in Perry Township - 44662 / Parcel #4400274

