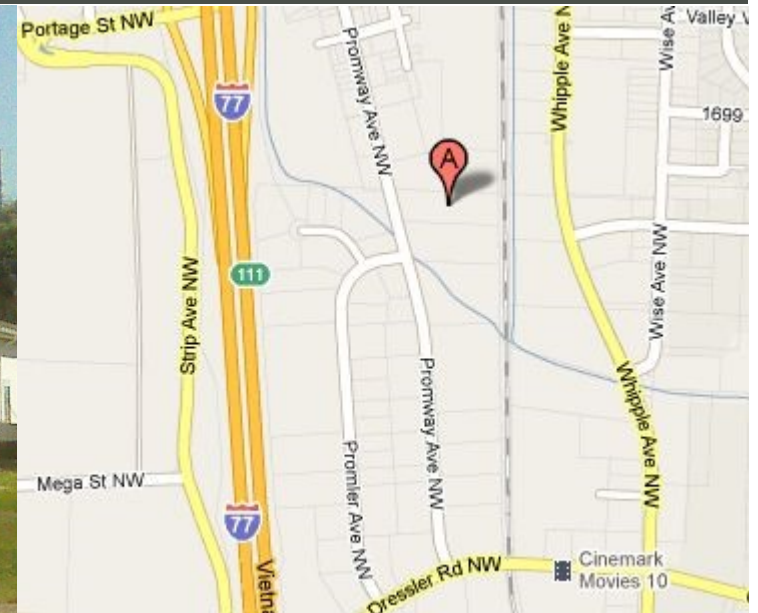


# FOR SALE

# INDUSTRIAL

6616 Promway Avenue NW - North Canton, OH 44720



### PROPERTY INFORMATION:

Total SF.....	7,208 SF	Loading Docks.....	None
Office.....	3,752 SF	Overhead Doors.....	2
Warehouse.....	2,392 SF	Cranes.....	No
Cold Storage.....	1,064 SF	Sprinklered.....	No
Land Area.....	2.56 Acres	Air-Conditioned.....	Office
County.....	Stark	Parking.....	Ample
Township.....	Jackson		
Zoning.....	I-1		
Ceiling Height.....	16' - 18'		

### UTILITIES:

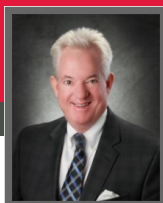
Gas.....	Dominion
Electric.....	AEP
Sewer.....	Public
Water.....	Well

### SALE DATA:

Price.....	<b>\$550,000.00</b>
Taxes.....	\$10,400 / Annually
Parcel Number.....	1615608

- Fantastic location near I-77 and Portage ramp
- 3,700 SF of very nice office area with Kitchen/Lounge area
- Huge yard area
- Very good property

For More Information, Contact:



**TOM JACKSON**  
President/Broker

Mobile: 330.418.1145

Office: 330.494.4411 Ext. 101  
tom@tomjacksonrealty.com

4706 Douglas Circle NW  
Canton, OH 44718  
Office: 330.494.4411

www.TomJacksonRealty.com

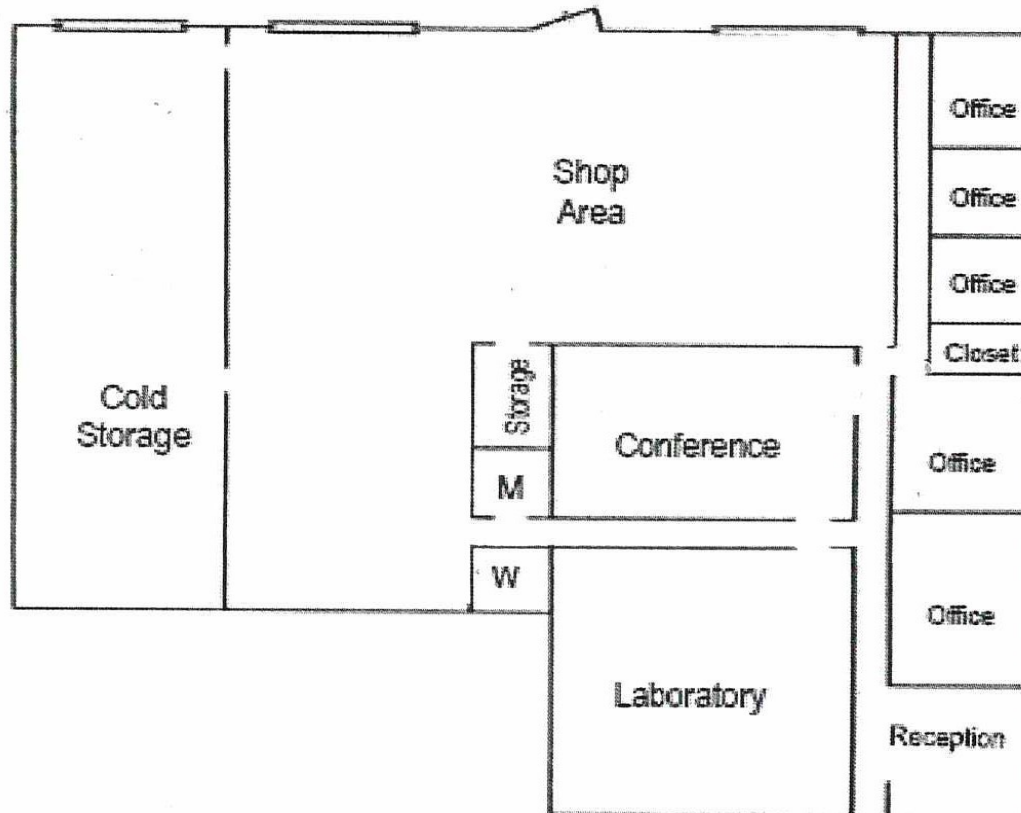


© 2021 Tom Jackson Commercial Realty. We obtained the information above from sources we believe to be reliable. However, we have not verified its accuracy and make no guarantee, warranty or representation about it. It is submitted subject to the possibility of errors, omissions, change of price, rental or other condition, prior sale, lease or financing, or withdraw without notice. We include projections, opinions, assumptions or estimates for example only, and they may not represent current or future performance of the property. You and your tax and legal advisors should conduct your own investigation of the property and transaction.

1/22/2021

**FOR SALE**

**INDUSTRIAL**



PARKING

**6616 Promway Avenue NW - North Canton OH 44720**